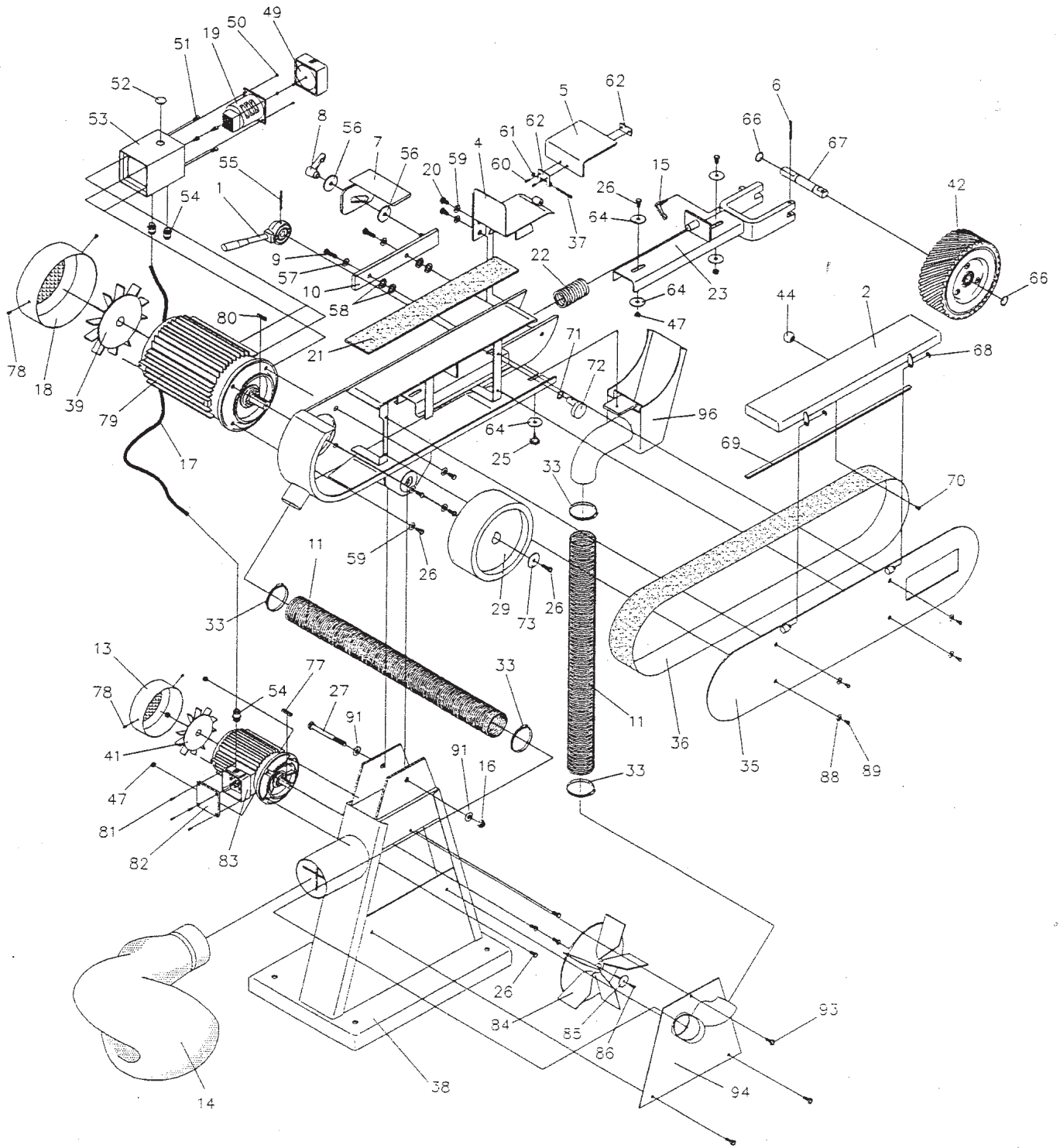


GRIMAX BELT GRINDING MACHINE WITH EXHAUST



Item No.	Description
1	Belt release handle
2	Belt guard
4	Spark arrester/tool rest
5	Eye shield
6	Split pin $\varnothing 8 \times 50$ mm
7	Tool rest
8	Handle for tool rest
9	Screw M10x25
10	Support for tool rest
11	Suction hose $\varnothing 60$
13	Fan cover for exhaust motor
14	Dust bag
15	Handle M6x25
16	Lock nut M12
17	Cable
18	Fan cover for motor
19	DISA switch
20	Screw M8x12
21	Graphite pad
22	Spring 5.5x43x125x11 mm
23	Cradle for contact wheel
25	Star handle $\varnothing 32$ M6x16
26	Screw M8x20
29	Drive wheel
33	Hose strap 58-75 mm
35	Side plate for GRIMAX
36	Grinding belt
37	Screw M6x45 CH
38	Dust extractor
39	Fan wheel for motor
41	Fan wheel for exhaust motor
42	Contact wheel with ball bearings
44	Ball handle M6x $\varnothing 25$
47	Lock nut M8
49	Contact for DISA switch
50	Sheet metal screw 2.9x6.5
51	Screw CH M5x10
52	Blind stopper $\varnothing 20$
53	Box for DISA switch
54	Cable disc PG 11
55	Split pin $\varnothing 4 \times 50$ mm
56	Disc 10x40x3.5
57	Disc 10x22x1.25
58	Disc 14.5x29x3
59	Disc 8.4x19x1.25
60	Screw M4x8
61	Lock nut M6
62	Hinge mounting for eye shields
64	Disc 5/16"
66	Lock ring $\varnothing 20$
67	Axle
68	Lock ring $\varnothing 7$
69	Rubber list 660 mm
70	Screw M6x12
71	Wave spring 14x0.3x21
72	Eccentric for 8 mm motor sheet
73	Disc 8.5x37x2
77	Parallel key 36x6x6
78	Screw M4x5
79	Motor
80	Parallel key
81	Screw M4x14 UHJ Z
82	Cover for terminal box
83	Exhaust motor 0.5HP
84	Fan wheel large 250 mm
85	Disc 5.5x30x1
86	Screw M5x30
88	Disc 1/4"
89	Screw M6x10
92	Disc 8.4x19x1.25
93	Screw Taptite M6x16
94	Side plate for base
96	Spark box with exhaust system