

MT3-EX

Portable Magnetic Drilling Machine

by Jancy Engineering Co.

for use with Annular Cutters and Twist Drills

WARNING!

BEFORE USE, BE SURE EVERYONE USING THIS MACHINE READS AND UNDERSTANDS ALL SAFETY AND OPERATING INSTRUCTIONS IN THIS MANUAL



EYE PROTECTION
REQUIRED



HEARING PROTECTION
REQUIRED



NEVER PLACE FINGERS
NEAR CUTTING AREA
OR MACHINE ARBOR.



LINE VOLTAGE
PRESENT



BEWARE OF
ROTATING
MACHINE PARTS

Dimensions and Specifications

Height	23-1/2" (596.9mm)
Width	10" (256mm)
Length	15" (381mm)
Weight	61 lbs. (27.7 kilos)
Drill Motor	1400 watts 50-60Hz single phase 40-140 or 120-480 RPM
Magnetic Dead Lift	4000 psi (19000N) on 1" plate
Magnet base Dimensions	4-15/16" (109mm) x 8-5/8" (219mm)
Spindle Taper	#3 Morse Taper
Max. Slugger® Cutter Diameter	2-1/2" (64mm)
Slugger® Max. Depth of Cut	2" (50mm)
Max. Twist Drill Diameter	1-1/4" (32mm)
Twist Drill Max. Depth of Cut	10-3/16" (258mm)
C/L Pilot to Magnet Face	1-1/2" (38mm)



IMPORTANT SAFETY INSTRUCTIONS

WARNING

When using electric tools, basic safety precautions should always be followed to reduce risk of fire, electric shock, and personal injury.

READ AND SAVE ALL INSTRUCTIONS FOR FUTURE REFERENCE

Before use, be sure everyone using this machine reads and thoroughly understands this manual as well as any labels or warnings attached to this machine

1. **Keep Work Area Clean**
Cluttered areas and benches invite injuries.
2. **Consider Work Area Environment**
Do not expose power tools to rain.
Do not use power tools in damp or wet locations.
Keep work area well lit.
Do not use tool in presence of flammable liquids or gases.
3. **Guard Against Electric Shock**
Prevent body contact with grounded surfaces. For example; pipes, radiators, ranges, refrigerator enclosures.
4. **Keep Children Away**
Do not let visitors contact tool or extension cord.
All visitors should be kept away from work area.
5. **Store Idle Tools**
When not in use, tools should be stored in dry, and high or locked-up place out of reach of children.
6. **Do Not Force Tool**
It will do the job better and safer at the rate for which it was intended.
7. **Use Right Tool**
Do not force small tool or attachment to do the job of a heavy-duty tool.
Do not use tool for purpose not intended-for example do not use a circular saw for cutting tree limbs or logs.
8. **Dress Properly**
Do not wear loose clothing or jewelry, they can be caught in moving parts.
Rubber gloves and non-skid footwear are recommended when working outdoors.
Wear protective hair covering to contain long hair.
9. **Use Safety Glasses**
Also use face or dust mask if cutting operation is dusty.
10. **Do Not Abuse Electrical Cord**
Never carry tool by cord or yank it to disconnect from receptacle.
Keep cord from heat, oil, and sharp edges.
11. **Secure Work**
Use clamps or a vise to hold work. It's safer than using your hand and it frees both hands to operate tool.
12. **Do Not Overreach**
Keep proper footing and balance at all times.
13. **Maintain Tools With Care**
Keep tools sharp and clean for better and safer performance.
Follow instructions for lubricating and changing accessories.
Inspect tool cords periodically and if damaged, have repaired by authorized service facility.
Inspect extension cords periodically and replace if damaged.
Keep handles dry, clean, and free from oil and grease.
14. **Disconnect Tools**
Unplug when not in use, before servicing, and when changing accessories, such as blades, bits and cutters.
15. **Remove Adjusting Keys and Wrenches**
Form habit of checking to see that keys and adjusting wrenches are removed from tool before turning it on.
16. **Avoid Unintentional Starting**
Do not carry plugged-in tool with finger on switches.
Be sure switches are off when plugging in.

17. Outdoor Use Extension Cords.

When tool is used outdoors, use only extension cords intended for use outdoors and so marked.

18. Stay Alert (Do not use when taking medications that may cause drowsiness.)

Watch what you are doing. Use common sense. Do not operate tool when you are tired.

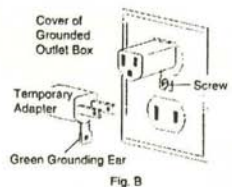
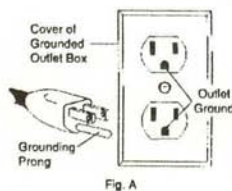
19. Check Damaged Parts

Before further use of the tool, a guard or other part that is damaged should be carefully checked to determine that it will operate properly and perform its intended function. Check for alignment of moving parts, binding of moving parts, breakage of parts, mounting, and any other conditions that may affect its operation. A guard or other part that is damaged should be properly repaired or replaced by an authorized service center
Do not use this tool if switches do not turn it on and off
Have defective switches replaced by authorized service center.

WARNING: SPECIAL INSTRUCTIONS

1. Read and follow operator's manual thoroughly. If you cannot locate your operator's manual call Jancy at 319-391-1300 for an additional FREE copy
2. DO NOT touch rotating cutter or parts
3. Always stop machine completely and unplug from power source before changing cutters, clearing chips, refilling lubricant or performing adjustments
4. Never wear loose clothing or gloves when working near cutting area or machine arbor.
5. Always wear eye protection. Any tool can shatter
6. Always use safety chain provided with machine
7. Always use proper tooling, keep cutters securely fastened
8. DO NOT use dull or broken cutters
9. Beware of ejected slugs at end of cut, they become HOT during the cut
10. Magnet will not hold properly on thin materials under 3/8" (9.5mm), rough or dirty surfaces
11. Keep all safety features functioning and working properly
12. Keep bottom of magnet burr free and clear of chips and debris
13. To reduce the risk of electrical shock, DO NOT remove or alter electrical panels or use machine in damp work areas
14. Use only authorized service centers for repairs

Grounding Instructions



WARNING! READ ALL INSTRUCTIONS

Improperly connecting the grounding wire can result in the risk of electrical shock. Check with a qualified electrician if you are in doubt as to whether the outlet is properly grounded. Do not modify the plug provided with tool. Never remove the grounding prong from the plug. Do not use tool if the cord or plug is damaged, have it repaired before using. If the plug will not fit the outlet, have a proper outlet installed by a qualified electrician. The MT3-EX must be plugged into an appropriate outlet, properly installed and grounded in accordance with all codes and ordinances. The plug and outlet should look like those in (Figure A).

(Figure B). illustrates a temporary adapter available for connecting grounded plugs (Figure A.) to two prong outlets. The rigid ear or lug extending from the adapter must be connected to a permanent ground such as a properly grounded outlet box or receptacle. Simply remove the center screw from the outlet, insert the adapter and reattach the screw through the green grounding ear to the outlet. If in doubt of proper grounding, call a qualified electrician.

SAVE THESE INSTRUCTIONS

Extension Cords

Use only 3-wire extension cords that have 3-prong grounding-type plugs and 3-pole receptacles that accept the tool's plug. Replace or repair damaged cords. Make sure your extension cord is in good condition. When using an extension cord, be sure to use one heavy enough to carry the current your product will draw. An undersized cord will cause a drop in line voltage resulting in loss of power and overheating. See table for the correct size to use depending on cord length and nameplate ampere rating. If in doubt, use the next heavier gage. The smaller the gage number, the heavier the cord.

MINIMUM GAGE FOR CORD SETS				
Volts	Total Length of Cord in Feet			
120V	0-25	26-50	51-100	101-150
240V	0-50	51-100	101-200	201-300
Amperage Rating More Than	Not More Than		AWG	
	0-6	18	16	14
6-10	18	16	14	12
10-12	16	16	14	12
12-16	14	12	Not Recommended	

MEDIDAS DE SEGURIDAD

1. Utilice siempre protección adecuada para sus ojos.
2. Mantenga sus manos y ropa siempre alejadas de las partes móviles.
3. Disponga de algún método de recogida para los trozos de metal expulsados por el taladro cuando representen un riesgo de heridas. (NOTA: trozos de metal son expulsados al final de cada corte.)
4. Use guantes de cuero para desprender las virutas que queden enroscadas en la broca y el cabezal portabrocas.
5. Apague inmediatamente el taladro si la broca se atasca en el material. Desenchufe el taladro y afloje la broca girando el cabezal. No intente desatascar la broca apagando el taladro o poniéndolo en marcha o invirtiendo la dirección de giro.
6. Nunca cambie la dirección de giro cuando el taladro esté en marcha.
7. Desconecte el taladro para cambiar la broca.
8. Utilice siempre la cadena de seguridad.

MESURES DE SECURITE

1. Toujours porter des lunettes de sécurité.
2. Ne pas approcher mains ou vêtements des pièces en mouvement.
3. Toujours avoir un moyen de récupérer la pastille là où celle-ci risquerait de blesser quelqu'un. (NOTE: La pastille est éjectée en fin de coupe.)
4. Porter des gants de protection en cuir pour enlever les ébarbures enroulées autour de l'emporte-pièce et de l'arbre.
5. Immédiatement arrêter la perceuse si l'emporte-pièce se coince dans la pièce. Débrancher la perceuse et libérer l'emporte-pièce en faisant tourner l'arbre. Ne pas essayer de libérer la perceuse en remettant le moteur en marche, en l'arrêtant, ou en le mettant en marche arrière.
6. Toujours arrêter la perceuse avant de la mettre en marche arrière.
7. Débrancher la perceuse avant de changer l'emporte-pièce.
8. Toujours se servir de la chaîne de sécurité.

ĐỀ PHÒNG AN TOÀN

1. Phải mang kính bảo vệ mắt.
2. Tránh chạm tay và quần áo vào các bộ phận máy đang cử động.
3. Luôn dự trữ một phương pháp để hứng những mảnh dũa khoan xong. (Chú ý: Những mảnh khoan này rất sắc, có thể gây thương hại.)
4. Cần mang găng tay bằng da thích hợp để gỡ những mảnh vụn bám quanh lưỡi khoan và trục máy khoan.
5. Ngừng máy liền ngay lập tức nếu lưỡi khoan bị kẹt vào những hàng đang hiện. Rút dây điện của máy liền ra, tháo lỏng bằng cách xoay trục trục máy liền. Không nên thi triển rồi trục máy bằng cách cho động cơ máy chạy, ngừng hoặc chạy ngược chiều.
6. Không được đổi chiều đang khoan tới rồi khoan lại khi máy liền đang chạy.
7. Rút dây điện máy khoan mỗi lần thay lưỡi khoan.
8. Luôn luôn xử dụng dây an toàn của máy liền.

Operating Instructions (Before You Begin)

Remove all contents from the packaging and inspect to ensure no damage was incurred during shipping. Your MT3-EX package should include the following:

QTY	PART #	DESCRIPTION
1	901	Metal tool box
1	903-904	Safety chain
1	905	Hex wrench s6
1	906	Hex wrench s5
1	907	Hex wrench s2.5
1	908	Flat wrench s8
1	910	Drill Drift


Caution: Be sure your MT3-EX is disconnected from power source before making adjustments

Assemble (3) spoke handles #407 to the MT3-EX feed hub #401, NOTE: Feed hub assembly is mounted on the right side of the machine frame. If necessary, it can be reversed for operating from the left side of the machine. Remove screw #404 and hub lock #405 from frame. Remove hub pinion shaft assembly #401 from right side of frame and insert it into left side of frame. Replace screw #404 and hub lock #405 into frame; tighten securely.

What you should know before you drill

1. Type of material to be drilled, Brinnell or Rockwell hardness, material thickness and position should all be determined to ensure proper selection of Jancy cutting tools, RPM, coolant and drilling time.
2. Remove any excessive mill scale or rust from surface to be drilled.
3. When drilling thin materials, Jancy recommends placing a steel plate under the workpiece and MT3-EX magnet area to increase magnetic holding force.
4. Material that has been flame cut may become heat treated and therefore difficult to drill. Avoid drilling near such areas whenever possible.
5. Special cutter lubricates are available for using the MT3-EX and annular cutters in the horizontal position. Consult your distributor for more information.

Getting Started

 **Caution: Disconnect your MT3-EX from power source before performing maintenance, making adjustments or changing cutting tools.**


Installing twist drills: Select desired #3 Morse Taper drill (1-1/4" maximum diameter) align drill tang in machine spindle, seat drill taper firmly in MT3 EX spindle socket.

Removing twist drills: Remove tapered shank drills from MT3 EX spindle by inserting the supplied drill drift in the MT3 EX spindle access slots, using a soft face hammer tap drift until drill becomes free from spindle socket.


Installing annular cutters: Place annular cutter arbor into MT3-EX spindle socket. Insert correct pilot pin in annular cutter, place cutter in arbor body aligning flats on cutter shank with set screws in arbor body, tighten socket set screws securely.

Selecting direction of rotation: The MT3-EX incorporates a forward/reversing motor, motor rotation is controlled by using the three position rotary selector switch #707 located on the control panel.

L = Counterclockwise rotation, R = Clockwise rotation, O = Neutral.

 **Caution: Never move selector switch #707 when motor is running, doing so will damage the MT3-EX drilling machine.**

Selecting motor speed: Determine the correct cutting speed for the application, move gear box shift selector on motor by lifting outward and repositioning lever.

 **Caution: Never change gears with motor running, doing so can result in personal injury or damage to your MT3-EX drilling machine.**

Motor RPM can be finely adjusted using the orange thumb wheel in the control box located the on upper portion of motor the housing.

Rotating the thumb wheel downward increases motor RPM; rotating the thumb wheel upward will decrease motor RPM.

Ready to make the cut

1. The surface you are working on should be clean and level, free from rust, scale, dirt and chips.
2. When using the annular cutter arbor fill coolant reservoir with a water-soluble coolant.
3. Position the MT3-EX on the workpiece.
4. Lower cutter/drill to surface of material, coolant flow starts when pilot pin is depressed. Coolant flow can be stopped by lifting pilot pin off work surface.



Caution: Always use safety chain

The safety chain is only intended to secure drill to workpiece in case of emergency, such as loss of power to magnetic base.

Safety chain must be secured to machine and the workpiece piece being drilled.

5. Move magnet rocker switch to the ON position, switch illuminates to indicate power is going to magnet. Make sure machine is firmly secured to workpiece.
6. Depress the motor ON switch to start drill motor.
7. Using the feed handles start a cut by applying pressure until the cutting tool has established an external groove in material.

Apply steady pressure through the remainder of cut. (Note: Do not peck drill when using annular cutters, annular cutters are designed to evacuate chips during the cut.)

Slugs produced by annular cutters should be expelled on the down stroke.



Caution: If drill motor should stop before a complete cut is made remove cutting tool from the hole before attempting to restart drill, failure to do so can result in personal injury or damage to the MT3-EX drilling machine.

8. After the cut is finished return motor to the full upright position, depress motor OFF button wait until motor fully stops. Move magnet rocker switch to the OFF position releasing magnetic base from the material.

Regular Maintenance

1. The motor slide assembly may become loose and require adjustment after the machine has been in service for the first few weeks, the 3mm hex key wrench provided in the tool kit is for performing this adjustment.

Refer to the parts breakdown on page 8 of this manual to become familiar with the MT3-EX, locate #103 adjustment screws on side of machine frame.

Move motor slide into the full up position by using the feed handles. (Note: Be certain slide area is clean and free from dirt, chips and other debris before performing adjustments.)

Lubricate slide area using a spray lubricant such as WD 40.

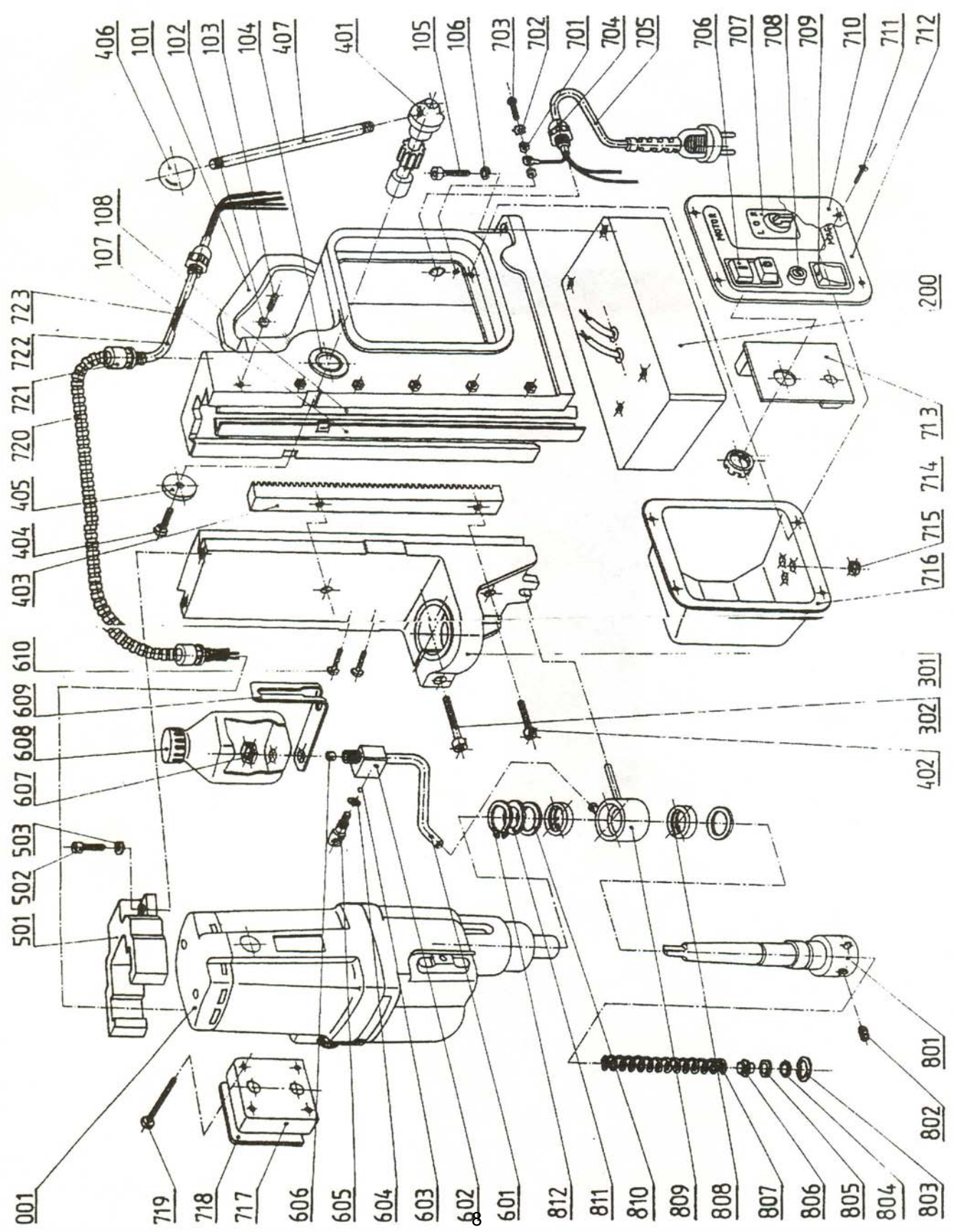
Loosen locking nuts #102 using the 3mm hex key, turn adjustment screw #103 clockwise to increase motor slide tension, to decrease motor slide tension turn adjustment screw #103 counter clockwise.

Proper adjustment would mean the feed handles controlling the motor and slide should stay in position without drifting down under it's own weight, after attaining proper slide tension tighten locking nuts #102

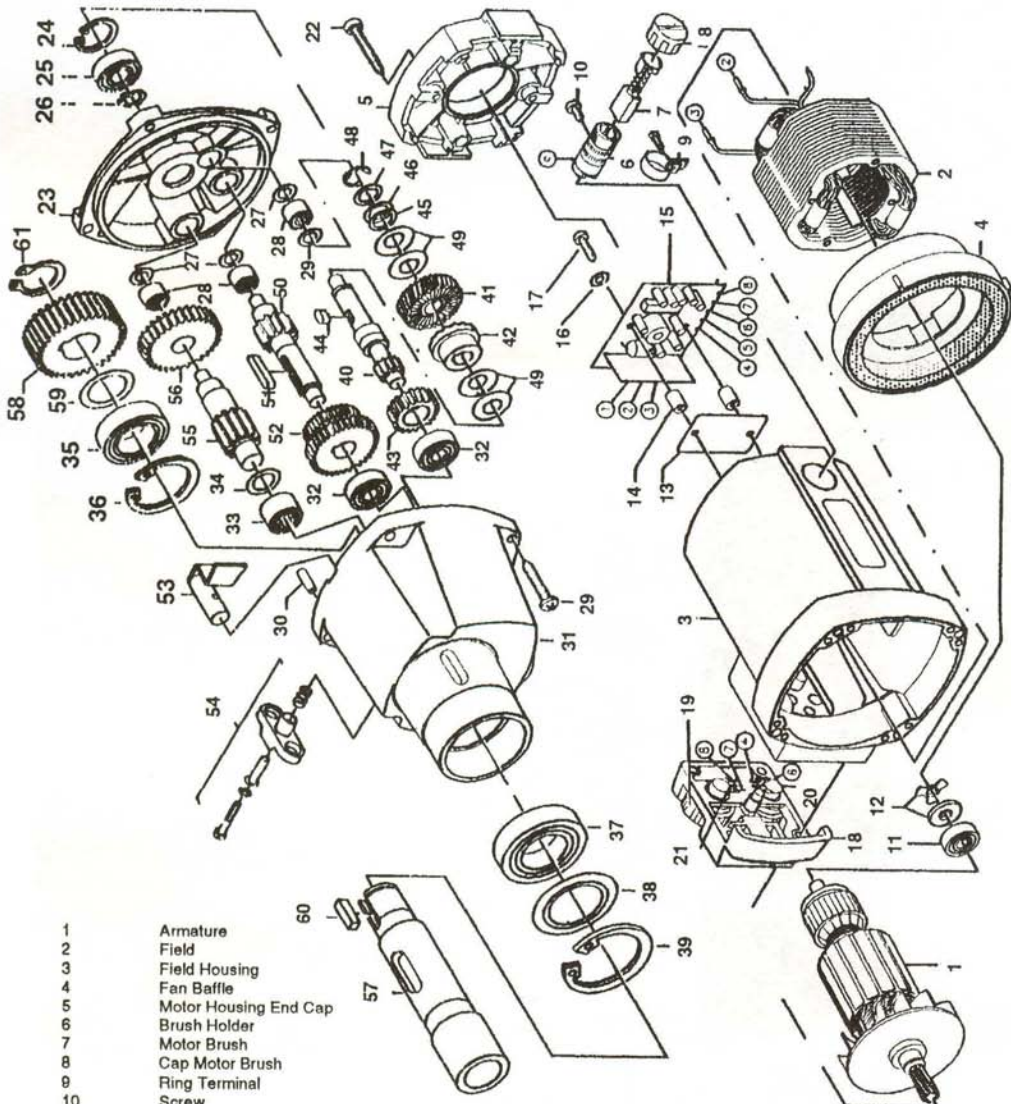
2. Keep magnet clean and free of chips, oil or other contaminant's.
4. Check spindle bore to ensure run out does not exceed .0035 per revolution.
This is most accurately measured by placing a dial test indicator on the inside of the spindle bore and rotating the spindle while observing the movement of the indicator.
5. Inspect coolant system reservoir, o-rings and coolant collar for wear from time to time.
6. Inspect motor brushes and replace after extended periods of machine usage.
7. Replace any worn parts and regularly tighten fasteners that become loose during daily usage.

MT3-EX parts list

PART #	DESCRIPTION	QTY.	PART #	DESCRIPTION	QTY.
001	Motor EMB 5R-L	1 ea	711	Screw M4x10	4 ea
101	Body	1 ea	712	Label	1 ea
102	Hex Nut M5	6 ea	713	Electronic controller	1 ea
103	Hex insert screw M5x16	6 ea	714	ON/OFF switch nut	1 ea
104	Self lubricating sleeve	2 ea	715	Rubber seal	3 ea
105	Hex socket bolt M6x25	4 ea	716	Controller cover	1 ea
106	Spring washer	4 ea	717	Branch box	1 ea
107	Slide insert	2 ea	718	Cover	1 ea
108	Spring Insert	1 ea	719	Screw GB 4.8x45	4 ea
200	Magnet	1 ea	720	Flexible cable cover	1 ea
301	Slide	1 ea	721	Culvert bushing	2 ea
302	Hex socket bolt M8x50	1 ea	722	Pipe conduit	1 ea
401	Pinion	1 ea	723	Motor drive cord	1 ea
402	Hex socket bolt M6x35	2 ea	801	Arbor body	1 ea
403	Gear rack	1 ea	802	Hex set screw M8x8	2 ea
404	Screw M6x20	1 ea	803	Seating ring 19W	1 ea
405	Flat washer	1 ea	804	Washer	1 ea
406	Knob	3 ea	805	Seal	1 ea
407	Spoke handle	3 ea	806	Plunger	1 ea
501	Motor support bracket	1 ea	807	Spring	1 ea
502	Hex socket bolt M6x30	2 ea	808	Seal ring	2 ea
503	Washer	2 ea	809	Coolant inducer	1 set
601	Plastic hose	1 ea	810	Slip ring	2 ea
602	Valve body	1 ea	811	Washer	1 ea
603	Ball bearing	1 ea	812	Seating ring	1 ea
604	O-ring	1 ea			
605	Valve knob	1 ea			
606	Sleeve	1 ea			
607	Hex nut M12	1 ea			
608	Coolant container	1 set			
609	Container bracket	1 ea			
610	Screw M4x12	2 ea			
701	Nut M4	2 ea			
702	Spring washer	1 ea			
703	Screw M4x16	1 ea			
704	Strain relief	2 ea			
705	Power cord	1 ea			
706	Motor ON/OFF switch	1 ea			
707	Rotary switch	1 ea			
708	Fuse holder	1 ea			
709	Magnet switch	1 ea			
710	Panel plate	1 ea			



MT3-EX motor parts



- | | | | | | |
|----|--------------------------|----|--------------------|----|-------------------------|
| 1 | Armature | 29 | Washer | 47 | Washer |
| 2 | Field | 30 | Dowel Pin | 48 | Lock Ring |
| 3 | Field Housing | 31 | Gear Case Housing | 49 | Flat Compression Spring |
| 4 | Fan Baffle | 32 | Bearing | 50 | Pinion Gear Shaft |
| 5 | Motor Housing End Cap | 33 | Bearing | 51 | Key |
| 6 | Brush Holder | 34 | Washer | 52 | Dual Gear |
| 7 | Motor Brush | 35 | Bearing | 53 | Shifting Fork |
| 8 | Cap Motor Brush | 36 | Internal Snap Ring | 54 | Gear Selector |
| 9 | Ring Terminal | 37 | Bearing | 55 | Pinion |
| 10 | Screw | 38 | Washer | 56 | Gear |
| 11 | Bearing | 39 | Internal Snap Ring | 57 | #3 MT Spindle Socket |
| 12 | Washer | 40 | Pinion Gear Shaft | 58 | Spindle Gear |
| 13 | Screen Insulator | 41 | Gear | 59 | Spindle Shim |
| 14 | Spacer | 42 | Sleeve Coupling | 60 | Key |
| 15 | Electronic Control Panel | 43 | Gear | 61 | External Snap Ring |
| 16 | Isolating Washer | 44 | Key | | |
| 17 | Screw | 45 | Shim Washer | | |
| 18 | Switch Cover | 46 | Shim Washer | | |
| 19 | Thumb Wheel | | | | |
| 20 | Potentiometer | | | | |
| 21 | Potentiometer | | | | |
| 22 | Screw | | | | |
| 23 | Gear Case Cover | | | | |
| 24 | Internal Snap Ring | | | | |
| 25 | Bearing | | | | |
| 26 | External Snap Ring | | | | |
| 27 | Washer | | | | |
| 28 | Bearing | | | | |

Jancy Six (6) month limited warranty

Jancy Engineering warrants the MT3-EX Drill to be free of defects in materials and workmanship under normal use for a period of six months from date of purchase. This warranty does not cover damage or wear which arise from misuse, accident, tampering or any other causes not related to defects in workmanship or materials. This warranty is conditioned upon the prepaid return of the MT3-EX Drill to Jancy Engineering Co. 2735 Hickory Grove Road, Davenport, IA 52804, for examination and verification of the claimed defects. If the defect is verified, Jancy will repair or replace free of charge any defective parts. The machine will be returned to the original purchaser, transportation prepaid, and the original purchaser will be reimbursed or credited for any shipping charges incurred when returning the machine to Jancy. If inspection of the machine does not disclose any defect in workmanship or materials, the original purchaser will be notified by Jancy of the costs of necessary repairs. If repairs are authorized, repairs will be made and the costs of repairs and return transportation will be billed through the customer's distributor.

THIS LIMITED WARRANTY IS EXCLUSIVE, AND IS IN LIEU OF ANY OTHER WARRANTIES (EXPRESSED OR IMPLIED) INCLUDING WARRANTY OF MERCHANTABILITY OR FITNESS FOR A PARTICULAR PURPOSE. SPECIAL AND CONSEQUENTIAL DAMAGES ARE EXPRESSLY EXCLUDED AND DENIED.

NOTE: When returning a machine for warranty repair, please include a copy of the sales invoice showing the serial number of the unit. This will eliminate the possibility of charging for repairs that should be covered under warranty. Our records only indicate when we ship a machine to our distributor, but we have no record of when the unit is sold to you, the customer. Thank you.

Record the following information

Model: _____

Serial #: _____

Date of purchase: _____

Purchased from: _____

Jancy Engineering Co.

2735 Hickory Grove Road, Davenport, Iowa 52804

Phone 319/391-1300

Fax 319/391-2323

Catalog Number MT3-EX

7/1/96

SLUGGER - MT3-EX

ITEM NO:	JANCY PART NO:	ITMS PART NO:	DESCRIPTION	QTY REQ
5	MT001-05	SPMT001-05	MOTOR HOUSING END CAP	
6	MT001-06	SPMT001-06	BRUSH HOLDER	
7	MT001-07	SPE55011	CARBON BRUSH	
8	MT001-08	SPE55002	CAP MOTOR BRUSH	
9	MT001-09		RING TERMINAL	
10	MT001-10		SCR,SHEET METAL 3.9 X 9.5	
11	MT001-11		BEARING	
12	MT001-12	SPMT001-12	DISTANCE WASHER	
13	MT001-13	SPMT001-13	SCREEN INSULATOR	
14	MT001-14	SPMT001-14	SPACER	
15	MT001-15	SPMT001-15	ELECTRONIC CONTROL PANEL	
16	MT001-16	SPMT001-16	ISOLATING WASHER	
17	MT001-17		SCR,SHEET METAL 3.9 X 25	
18	MT001-18		SWITCH COVER	
19	MT001-19	SPMT001-19	THUMB WHEEL	
20	MT001-20	SPMT001-20	POTENTIOMETER 100K OHM	
21	MT001-21	SPMT001-21	POTENTIOMETER 220 OHM	
22	MT001-22	SPMT001-22	SCR,SHEET METAL 4.8 X 38	
23	MT001-23	SPMT001-23	GEAR CASE COVER	
24	MT001-24		INTERNAL SNAP RING	
25	MT001-25		BEARING	
26	MT001-26		EXTERNAL SNAP RING	
27	MT001-27		WASHER	
28	MT001-28		BEARING	
29	MT001-29		WASHER	
30	MT001-30		DOWEL PIN 5 X 16	
31	MT001-31		GEAR CASE HOUSING	
32	MT001-32		BEARING	
33	MT001-33		BEARING	
34	MT001-34		WASHER	
35	MT001-35		BEARING	
36	MT001-36		INTERNAL SNAP RING	
37	MT001-37		BEARING	
38	MT001-38		WASHER	
39	MT001-39		INTERNAL SNAP RING	

40	MT001-40		PINION GEAR SHAFT	
41	MT001-41		COUPLING GEAR	
42	MT001-42		SLEEVE COUPLING	
43	MT001-43		GEAR	
44	MT001-44		KEY	
45	MT001-45		SHIM WASHER	
46	MT001-46		SHIM WASHER	
47	MT001-47		WASHER	
48	MT001-48		LOCK WASHER	
49	MT001-49		FLAT COMPRESSION SPRING	
50	MT001-50		PINION GEAR SHAFT	
51	MT001-51		KEY	
52	MT001-52		DUAL GEAR 39/25Z	
53	MT001-53		SHIFTING FORK	
54	MT001-54	SPMT001-54	GEAR SELECTOR	
55	MT001-55		PINION	
56	MT001-56		GEAR	
57	MT001-57	SPE55337	#3 MT SPINDLE SOCKET	
58	MT001-58		SPINDLE GEAR	
59	MT001-59		SPINDLE SHIM	
60	MT001-60		KEY	
61	MT001-61		EXTERNAL SNAP RING	
9	MT9		TOOL BOX ASSY	
901	MT901	SPMT901	METAL TOOL BOX	1
903	MT903	SPMT903	CHAIN 1.8M	1
904	MT904	SPMT903/904	CLIP HOOK	1
905	MT905	SPMT905	HEX WRENCH S6	1
906	MT906	SPMT906	HEX WRENCH S5	1
907		35806	HEX WRENCH S2.5	1
908		35807	FLAT WRENCH S8	1
910		3029	WEDGE	1
911	MT911		OPERATORS MANUAL	1
0			MOTOR DRIVE ASSY	
001	MT001-240		MOTOR COMPLETE 240 V(INC. 910)	1
1	MT1		BODY ASSY	
101	MT101	SPMT101	BODY (INC. MT104)	1
102		35102	HEX NUT (SHORT) M5	6
103	MT103	SPMT103	HEX INSERT SCREW M5 X 22	6
104	MT104	SPMT104	SELF LUBRICATING SLEEVE	2

105	MT105	SPMT105	HEX SOCKET BOLT M6 X 25	4
106	35106	SPMT106	SPRING WASHER 6.1	4
107	MT107	SPMT107L	SLIDE INSERT	1
107	MT107	SPMT107R	SLIDE INSERT	1
108	MT108	SPMT108	SPRING INSERT	1
2	MT2	SPMT2	ELECTROMAGNETIC BASE	1
3	MT3		SLIDE ASSY	
301	MT301		SLIDE	1
302	MT302		HEX SOCKET BOLT M8X50	1
4	MT4		FEED MECHANISM ASSY	
401	MT401	SPMT401	PINION	1
402	MT402	SPMT402	HEX SOCKET BOLT M6 X35	2
403	MT403	SPMT403	GEAR RACK	1
404	MT404	SPMT404	SCREW M6 X 20	1
405	35405	SPMT35405	FLAT WASHER	1
406	35406		KNOB	3
407	MT407	SPMT407	SPOKE HANDLE (INC. 35406)	3
5	MT5		MOTOR SUPPORT ASSY	
501	MT501	SPMT501	MOTOR SUPPORT BRACKET	1
502	MT502		HEX SOCKET BOLT M6 X 30	2
503	MT503		WASHER 6.4	2
6	MT6		COOLING SYSTEM	
601	MT601		PLASTIC HOSE (FLEXIBLE)	1
602	35603	SPMT35603	VALVE BODY	1
			(INC. 35605,35606,35607,35608,35609)	
603	35605		BALL BEARING DIA. 5.5	1
604	35604		O-RING DIA. 5 X 2	1
605	35607	SPMT35607	VALVE KNOB	1
606	35608		SLEEVE	1
607	35609		HEX NUT (SHORT) M12	1
608	35612		COOLANT CONTAINER WITH SEAL IN CAP	1
609	35610	SPMT35610	(609) CONTAINER BRACKET	1
610	35611		(610) SCREW M4 X 12	2
7	MT7		WIRING SYSTEM	
701	35701	SPMT35701	NUT M4	2
702	35702	SPMT35702	SPRING WASHER 4.3	1
703	35703	SPMT35703	SCREW M4 X 16	1
704	35704		STRAIN RELIEF PG11	2
705	35705		POWER CORD WITH PLUG 3M	1

706		35706	SPMT35706	MOTOR ON/OFF SWITCH	1
707	MT707			ROTARY SWITCH	1
708		35707	SPMT35707	FUSE SOCKET	1
709		35708	SPMT35708	MAGNET SWITCH W4	1
710	MT710			PANEL PLATE (INC. MT712)	1
711		35710	SPMT35710	SCREW M4 X 10	4
712	MT712			LABEL	1
713	MT713		SPMT713	ELECTRONIC CONTROLLER SW-05/240V	1
714		35713	SPMT35713	ON/OFF SWITCH SECURING NUT	1
715		35714	SPMT35714	RUBBER SEAL DIA. 10	3
716	MT716			CONTROLLER COVER	1
717	MT717			BRANCH BOX (INC. MT718)	1
718	MT718			COVER	1
719	MT719			SCREW GB 4.8 X 45	4
720	MT720			FLEXIBLE CABLE COVER	1
721	MT721			CULVERT BUSHING	2
722	MT722			PIPE CONDUIT	1
723	MT723			MOTOR DRIVE CORD	1
8	MT8			CUTTER HOLDER ASSY	
801	MT801		SPMT801	ARBOR BODY	1
802	MT802		SPMT802	HEX SET SCREW M10 X 10	2
803	MT803		SPMT803	SEATING RING 19W	1
804	MT804		SPMT804	WASHER	1
805	MT805		SPMT805	SEAL	1
806	MT806		SPMT806	PLUNGER	1
807	MT807		SPMT807	SPRING WASHER 4.3	1
				(INC. MT803,MT804,MT805,MT806)	
808	MT808			SEAL RING	2
809	MT809		SPMT809	COOLANT INDUCER	1 SET
				(INC. MT808, MT810,MT811,MT812)	
810	MT810			SLIP RING	2
811	MT811			WASHER	1
812	MT812			SEALING RING 32Z	1
				MOTOR PARTS	
1	MT001-01-240		SPMT001-01-240	ARMATURE ,240 VOLT	
2	MT001-02-240		SPMT001-02-240	FIELD, 240 VOLT	
3	MT001-03		SPE55001	FIELD HOUSING	
4	MT001-04			FAN BAFFLE	