

Slugger® Airforce®

Slugger Portable Magnetic Drilling Machine

OPERATOR'S MANUAL

WARNING!

BEFORE USE, BE SURE EVERYONE USING THIS MACHINE READS AND UNDERSTANDS ALL SAFETY AND OPERATING INSTRUCTIONS IN THIS MANUAL.



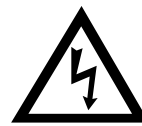
EYE PROTECTION
REQUIRED



HEARING PROTECTION
REQUIRED



NEVER PLACE
FINGERS NEAR
CUTTING AREA OR
MACHINE ARBOR



LINE VOLTAGE
PRESENT



BEWARE OF
ROTATING
MACHINE PARTS

CONTENT CHECKLIST

Please contact factory if your package is missing any of these supplemental items:

DESCRIPTION	PART #	QTY
OPERATOR'S MANUAL	LIT108A	1
WARRANTY CARD	0070342	1
MAGNET ON/OFF LABEL	20214	1
M6-1X6MM	0018222	2
3MM THANDLE KEY	0020213	1
SAFETY STRAP	0151251	1
SQUEEZE BOTTLE	0215257	1
SQUEEZE BOTTLE CAP	0215258	1



MODEL #20002

Serial # _____

Date of Purchase _____

Slugger Portable Magnetic Drilling Machine

Congratulations on your purchase of a Slugger portable magnetic drilling machine. Slugger drilling machines are designed to deliver fast, efficient hole drilling performance in portable applications. Please take a moment to complete and mail your product warranty registration card. Doing so will validate your machine's warranty period and ensure prompt service if needed. Thank you for selecting a Slugger product from Jancy Engineering Company.

TABLE OF CONTENTS

Important Safety Instructions	3-4
Contents of Package	5
Getting Started	5
Changing the Pilot	6
Air Supply, Lubrication and Connection	7
Basic Troubleshooting	7
Special Instructions and Regular Maintenance	8
Machine Breakdown	9
Machine Parts List	10
Available Slugger Cutters	11

LIMITED WARRANTY

Jancy Engineering Company will, within one (1) year from the original date of purchase, repair or replace any goods found to be defective in materials or workmanship, provided the product warranty registration card has been returned to Jancy Engineering Company within thirty (30) days of purchase date. This warranty is void if the item has been damaged by accident, neglect, improper service or other causes not arising out of defects in materials or workmanship. This warranty does not apply to machines and/or components which have been altered, changed, or modified in any way, or subjected to use beyond recommended capacities and specifications. Electrical components are subject to respective manufacturers' warranties. All goods returned defective shall be returned prepaid freight to Jancy, which shall be the buyer's sole and exclusive remedy for defective goods. In no event shall Jancy Engineering be liable for loss or damage resulting directly or indirectly from the use of merchandise or from any other cause. Jancy Engineering is not liable for any costs incurred on such goods or consequential damages. No officer, employee or agent of Jancy is authorized to make oral representations of fitness or to waive any of the foregoing terms of sale and none shall be binding on Jancy.

**JANCY ENGINEERING RESERVES THE RIGHT TO MAKE
IMPROVEMENTS AND MODIFICATIONS TO DESIGN WITHOUT PRIOR NOTICE.**

IMPORTANT SAFETY INSTRUCTIONS

WARNING!

WHEN USING POWER TOOLS, BASIC SAFETY PRECAUTIONS SHOULD ALWAYS BE FOLLOWED TO REDUCE RISK OF PERSONAL INJURY.

READ AND SAVE ALL INSTRUCTIONS FOR FUTURE REFERENCE.

1. **Keep Work Area Clean**
 - Cluttered areas and benches invite injuries.
2. **Consider Work Area Environment**
 - Do not expose power tools to rain.
 - Do not use power tools in damp or wet locations.
 - Keep work area well lit.
 - Do not use tool in presence of flammable liquids or gases.
3. **Guard Against Electric Shock**
 - Prevent body contact with grounded surfaces. For example: pipes, radiators, ranges and refrigerator enclosures.
4. **Keep Children Away**
 - Do not let visitors contact tool or extension cord.
 - All visitors should be kept away from work area.
5. **Store Idle Tools**
 - When not in use, tools should be stored in a dry, high and locked-up place, out of reach of children.
6. **Do Not Force Tool**
 - It will do the job better and safer at the rate for which it was intended.
7. **Use Right Tool**
 - Do not force a small tool or attachment to do the job of a heavy-duty tool.
 - Do not use tool for unintended purpose. For example: Do not use a circular saw for cutting tree limbs or logs.
8. **Dress Properly**
 - Do not wear loose clothing or jewelry. They can be caught in moving parts.
 - Non-skid footwear is recommended when working outdoors.
 - Wear protective hair covering to contain long hair.
9. **Use Safety Glasses**
 - Also use face or dust mask if cutting operation is dusty.
10. **Do Not Abuse Electrical Cord**
 - Never carry tool by cord or yank it to disconnect from receptacle.
 - Keep cord from heat, oil and sharp edges.
11. **Secure Work**
 - Use clamps or a vise to hold work. It's safer than using your hand and it frees both hands to operate tool.
12. **Do Not Overreach**
 - Keep proper footing and balance at all times.

IMPORTANT SAFETY INSTRUCTIONS

13. Maintain Tools With Care

- Keep tools sharp and clean for better and safer performance.
- Follow instructions for lubricating and changing accessories.
- Inspect tool cords periodically and if damaged, have repaired by authorized service facility.
- Inspect extension cords periodically and replace if damaged.
- Keep handles dry, clean, and free from oil and grease.

14. Disconnect Tools

- Disconnect air hose when not in use, before servicing, and when changing accessories, such as bits and cutters.

15. Remove Adjusting Keys And Wrenches

- Form habit of checking to see that keys and adjusting wrenches are removed from tool before turning it on.

16. Avoid Unintentional Starting

- Do not carry a connected tool. Always disconnect from air source before moving.
- Be sure switches are off before connecting to a power source.

17. Outdoor Use Extension Cords

- When tool is used outdoors, use only extension cords intended for use outdoors and so marked.

18. Stay Alert

- Watch what you are doing. Use common sense. Do not operate tool when you are tired.
- Do not use when taking medications that may cause drowsiness.

19. Check Damaged Parts

- Before further use of the tool, a guard or other part that is damaged should be carefully checked to determine that it will operate properly and perform its intended function.
- Check alignment of moving parts, binding of parts, breakage of parts, mounting, and any other conditions that may affect its operation. A guard or other part that is damaged should be properly repaired or replaced by an authorized service center.
- Do not use this tool if switches do not turn it on and off. Have defective switches replaced by authorized service center.

WARNING!

DO NOT OPERATE MACHINE IF WARNING AND/OR INSTRUCTION LABELS ARE MISSING OR DAMAGED.

CONTACT JANCY ENGINEERING FOR REPLACEMENT LABELS.

 **DANGER!**
NEVER PLACE HANDS, FINGERS,
GLOVES OR CLOTHING NEAR
CUTTING AREA OR ROTATING
MACHINE PARTS.



 **WARNING!**
Always use eye protection.
Any tool can shatter.

 **CAUTION!**
Always wear hearing protection.

 Beware of ejected slug at
end of the cut.

SAFETY INSTRUCTIONS

- Read and follow operators manual thoroughly. If you cannot locate your operators manual call Jancy Engineering Company at 563-391-1300 for a FREE copy.
- Always stop machine completely and disconnect from power source before changing cutters, performing adjustments, or servicing.
- Do not use altered, dull or broken cutters.
- Never wear loose clothing or gloves when working near cutting area or machine arbor.
- Always use provided safety strap.
- Use proper tooling, keep cutters securely fastened.
- Magnet will not hold properly on thin materials, rough, and/or dirty surfaces, keep bottom of magnet free of chips or debris.
- Keep all safety features functioning and working properly.
- Use only authorized service centers for repairs.

OPERATING INSTRUCTIONS (BEFORE YOU BEGIN)

Remove all contents from packaging and inspect to ensure no damage was incurred during shipping. Your Airforce package should also include the following:

DESCRIPTION	PART #	QTY
OPERATOR'S MANUAL	IIT108A	1
WARRANTY CARD	0070342	1
MAGNET ON/OFF LABEL	20214	1
M6-1X6MM	0018222	2
3MM THANDLE KEY	0020213	1
SAFETY STRAP	0151251	1
SQUEEZE BOTTLE	0215257	1
SQUEEZE BOTTLE CAP	0215258	1

GETTING STARTED

CAUTION!

ALWAYS DISCONNECT AIRFORCE FROM AIR HOSE BEFORE MAKING ADJUSTMENTS.

WHAT YOU SHOULD KNOW BEFORE YOU DRILL

1. Type of material to be drilled, Brinnell or Rockwell hardness, material thickness and position should all be determined to ensure proper selection of Slugger cutting tools, RPM, coolant and drilling time.
2. Remove any excessive mill scale or rust from surface to be drilled.
3. Material that has been flame cut may have become heat-treated and therefore difficult to drill. Avoid drilling near such areas whenever possible.
4. Drilling with the Airforce in horizontal positions requires a special lubrication for Slugger cutters. Consult Jancy Engineering for details.

BEFORE THE CUT

WARNING!

DO NOT INSTALL CUTTERS OR MAKE ADJUSTMENTS WITH AIR SUPPLY CONNECTED.

1. Align flats on cutter shank with arbor body set screws. Insert cutter shank into arbor body.
2. Tighten set screw securely on cutter shank flats. **NOTE:** Set screws should be recessed in arbor body when tight.
3. The surface you are working on should be clean, flat and free from rust, scale, dirt and chips.
4. Fill cutter throat with lubricant (Jancy cutting paste, part #0010205)
5. Position drilling unit on workpiece.
6. Safety strap must be securely fastened around the drill and the workpiece. Feed safety strap (snap-hooked) through the hand grip. Pass the snap hook through the loop in the transfer hose then slide the strap between the drive motor and the actuator housing. Loop strap around workpiece and attach D-ring to snap hook. Depress through latch on cam buckle and pull flat end of safety strap until excess slack is removed. **NOTE:** The safety strap is intended only to restrain the drill in case of magnet-workpiece separation.

READY TO MAKE THE CUT

1. Position the pilot pin in location of cut to be made.
2. Slide the actuating shaft forward (toward feeding handle) to engage magnet.
3. Start drilling motor by rotating locking pawl and depressing motor lever.
4. Use the feed handle to advance the cutter into the workpiece material. Establish a cutting groove in the material and use steady pressure on the feed handle throughout the cutting cycle. **NOTE:** Slugger cutters are designed for uninterrupted cutting. Chips are evacuated during the cut. Do not peck drill when using Slugger cutters.

CAUTION!

IF DRILL MOTOR SHOULD STALL OR STOP BEFORE A COMPLETE CUT IS MADE, ALWAYS REMOVE CUTTER FROM HOLE BEFORE ATTEMPTING TO RESTART MOTOR. FAILURE TO DO SO COULD RESULT IN PERSONAL INJURY AND/OR DAMAGE TO THE SLUGGER DRILLING MACHINE.

CAUTION!

ALWAYS USE SAFETY STRAP. FAILURE TO DO SO COULD RESULT IN PERSONAL INJURY AND/OR DAMAGE TO THE SLUGGER DRILLING MACHINE.

AFTER THE CUT

CAUTION!

EJECTED SLUG CAN BE HOT AFTER THE CUT. USE CAUTION IF HANDLING SLUGS. SLUG IS EJECTED USING SPRING PRESSURE.

1. After Slugger cutter has finished the cut, the “slug”, or uncut center portion of material, will be expelled when motor is returned to the full up position.
2. Return machine into full upright position and release motor lever, wait until motor completely stops.
3. Slide actuating shaft back (away from feed handle) to release magnet.

CHANGING THE PILOT PIN

1. Remove two gear cover fasteners (item #72).
2. Remove gear cover (item #12).
3. Remove set screw (item #69) located in the center of the spur gear (item #2).
4. Lift pilot spring and pilot from the cavity.
5. Reverse the procedure to install the pilot. **NOTE:** Thread the set screw in 5 turns.

AIR SUPPLY • LUBRICATION • CONNECTION

AIR SUPPLY

1. 90 psi at 18 cfm of regulated clean, dry air is needed for proper tool performance.
2. Too much air supply pressure can increase load on cutters and tool drive components, while too little pressure will limit tool performance.
3. A filter, regulator and lubricator is recommended.

LUBRICATION

1. Set a lubricator to deliver air motor oil at a rate of 2 drops per minute. Motor performance and motor life depend on proper lubrication.

HOSE AND CONNECTION

1. Use supply hose that is 3/8" or greater. The fitting adapter supplied is an industrial interchange style.

BASIC TROUBLESHOOTING

1. **Magnetic base not holding securely**
 - Material is too thin to engage magnet.
 - Surface of material being drilled must be free of chips, debris, rust and mill scale.
 - Does size of cutter exceed machine's rated capacity?
 - Check magnet face for unevenness, nicks and burrs.
2. **Drill motor running, arbor and spindle not turning**
 - Possible sheared spindle key.
3. **Motor slows when drilling**
 - Excessive downfeed pressure during drilling cycle will cause motor to slow.
 - Does cutting tool need to be resharpened?
4. **Slugs not ejecting from cutter**
 - Lack of coolant causing slugs to expand in cutter bore.
 - Is correct pilot pin being used?
 - Possible broken internal arbor parts.
5. **Breaking cutters**
 - How is coolant being applied? Coolant must be supplied to interior of cutter.
 - Excessive feed pressure being applied when cutter initially contacts work surface.
 - Confirm material hardness.
 - Drilling stacked materials with incorrect cutter.
 - Dull cutters; dull or chipped cutting edges require excessive feed pressure, resulting in breakage.
 - Excessive arbor runout – see regular maintenance on page 8.
6. **Oversized or rough holes**
 - Insufficient coolant.
 - Excessive feed pressure.
 - Dull cutter.
 - Excessive arbor runout – see regular maintenance on page 8.

SPECIAL INSTRUCTIONS

1. If you require an additional manual, please contact Jancy Engineering at (563) 391-1300 for a **FREE** copy.
2. Never place hands, fingers, gloves or clothing near cutting area or rotating machine parts.
3. Always disconnect machine from air supply before changing cutters, clearing chips or performing adjustments.
4. Keep all safety features functioning and working properly.
5. Never wear loose clothing, gloves or jewelry when working near cutting area or rotating machine parts.
6. Always use eye and hearing protection.
7. Always use safety strap provided with machine.
8. Always use proper tooling. Keep cutters securely fastened.
9. Do not use dull or broken cutters.
10. Beware of slugs ejected at end of cut. They become HOT during the cut.
11. Magnet will not hold properly on thin materials or rough and dirty surfaces.
12. Keep bottom of magnet burr free and clear of chips and debris.
13. Use only authorized service centers for repairs.

REGULAR MAINTENANCE

1. Regularly check feed handle return functions

Never operate the drill if the feed handle spring return has failed.

2. Inspect magnet base

Keep bottom of magnet clean, free of chips, burrs, nicks, oil and other contaminants. Inspect magnet face to ensure surface is flat and square. A worn magnet surface dramatically reduces magnet holding force.

CAUTION!

ALWAYS REMOVE CUTTER FROM ARBOR BODY BEFORE MEASURING RUNOUT.
NEVER USE HANDS OR FINGERS TO ROTATE ARBOR OR MOTOR SPINDLE.

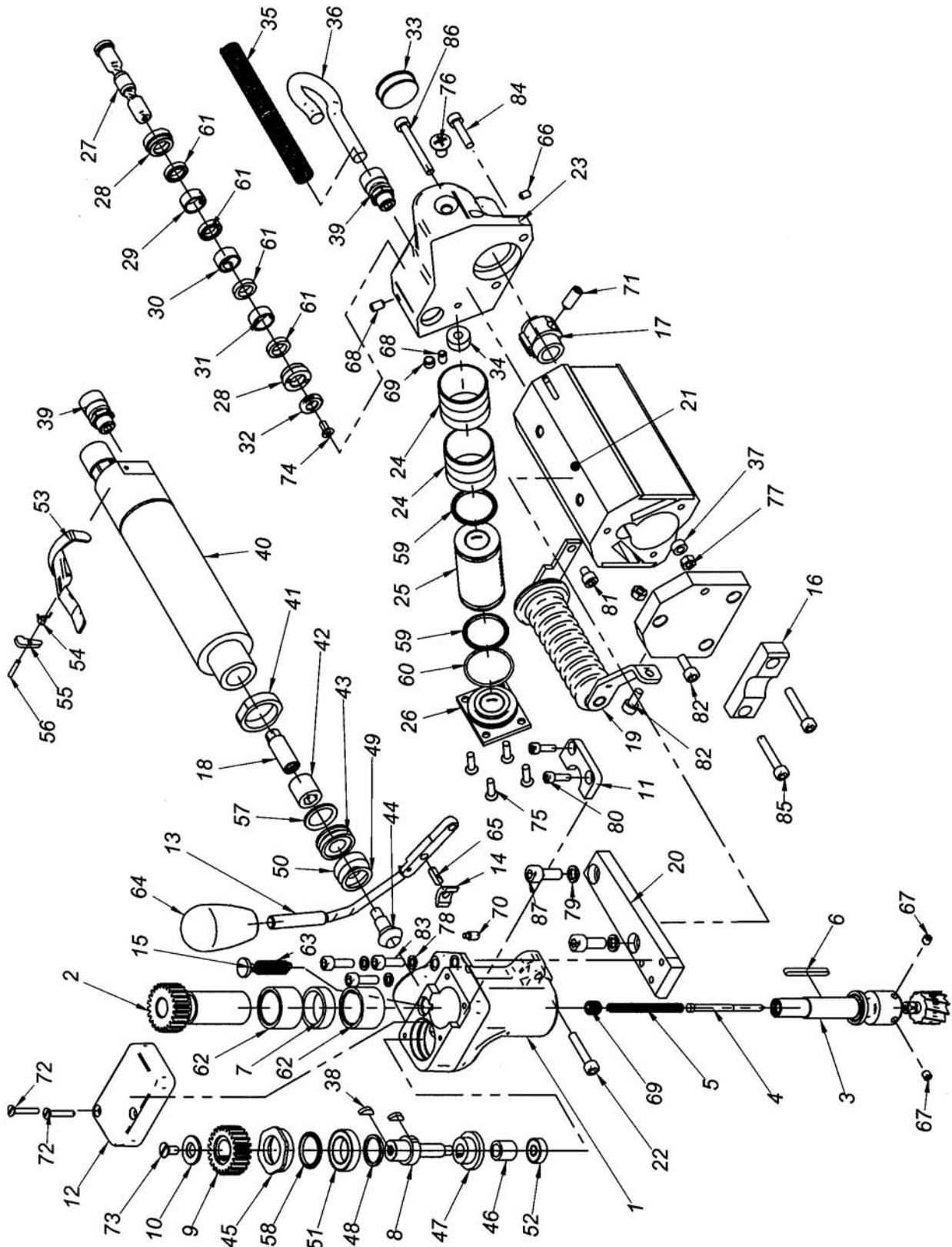
3. Check arbor runout

Arbor runout should not exceed .0035 inches per revolution. This is most accurately measured by placing a dial indicator needle inside of arbor bore and rotating arbor while observing indicator.

CAUTION!

NEVER OPERATE MACHINE WITH WORN OR MISSING PARTS. USE ONLY JANCY REPLACEMENT PARTS.

MACHINE BREAKDOWN



MACHINE PARTS LIST

ITEM	DESCRIPTION	PART #	QTY
1	GEARCASE	031801	1
2	GEAR, SPUR	031802	1
3	SPINDLE	031803	1
4	PILOT	031804	1
5	PILOT SPRING	031805	1
6	SQUARE KEY 4 X 4 X 45	031806	1
7	SPACER	031807	1
8	GEAR-BOX SHAFT	031808	1
9	PINION, SPUR	031809	1
10	WASHER	031810	1
11	RETAINER PLATE	031811	1
12	GEAR COVER	031812	1
13	HANDLE	031813	1
14	SPINDLE FEED KEY	031814	1
15	SPRING ANCHOR	031815	1
16	CHIP BREAKER	031301	1
17	ACTUATING GEAR	031302	1
18	COUPLER SHAFT	031601	1
19	HAND GRIP	031303	1
20	PLATE	031304	1
21	MAGNETIC ASSEMBLY	031305	1
22	SHCS M6 X 30	0070537	1
23	ACTUATOR HOUSING	031306	1
24	SLEEVE	031307	2
25	ACTUATING PISTON	031308	1
26	PLUG	031309	1
27	ACTUATING SHAFT	031310	1
28	THREADED SLEEVE	031311	2
29	REARWARD SLEEVE	031312	1
30	CENTER SLEEVE	031313	1
31	FORWARD SLEEVE	031314	1
32	SHAFT RING	031315	1
33	PLUG	031316	1
34	DAMPER	031317	1
35	HOSE WRAP	031318	1
36	TRANSFER HOSE	031319	1
37	RING	031320	1
38	WOODRUFF KEY	031816	2
39	CONNECTOR	031602	2
40	PNEUMATIC MOTOR	031603	1
41	JAM NUT	031604	1
42	COUPLER SLEEVE	031605	1
43	SPANNER NUT	031817	1
44	SPIRAL BEVEL PINION	031818	1

ITEM	DESCRIPTION	PART #	QTY
45	PACKING NUT	031819	1
46	SHAFT NUT	031820	1
47	SPIRAL BEVEL GEAR	031821	1
48	SHAFT WASHER	031822	1
49	SPRING WASHER - Ø19	031823	1
50	BALL BEARING 63000 2Z	031824	1
51	BALL BEARING 6180427	031825	1
52	BALL BEARING 607 2Z	031826	1
53	MOTOR LEVER	031606	1
54	SPRING	031607	1
55	LOCKING PAWL	031608	1
56	PIN	031609	1
57	O-RING Ø20 X 3.5	031610	1
58	O-RING Ø22 X 3	031827	1
59	O-RING Ø29.2 X 3	031321	2
60	O-RING Ø34 X 2	031322	3
61	SEAL U2 Ø12 X Ø18 X 4	031323	4
62	NEEDLE BEARING	031828	2
63	FEED HANDLE RETURN SPRING	031829	1
64	HANDLE KNOB	031830	1
65	PIN Ø6 X 14	XM82NA1D	1
66	HEX INSERT SCREW M5 X 8	XM51LH0G	1
67	HEX INSERT SCREW M6 X 6	0018222	2
68	HEX INSERT SCREW M6 X 10	XM51NJ10	2
69	HEX INSERT SCREW M8 X 6	XM51QK0F	2
70	HEX INSERT SCREW M6 X 12	XM51NJ1B	1
71	HEX INSERT SCREW M8 X 20	XM51QK20	1
72	CRFHMS M4 X 25	XM12HG2E	2
73	CRFHMS M6 X 12	XM12UJ1B	1
74	CRFHMS M5 X 12	0151186	1
75	CRFHMS M5 X 20	XM12LH20	4
76	CRFHMS M8 X 16	XM12QK1F	1
77	HEX NUT M6	XM70NJ00	2
78	SPLIT WASHER M6	XM61NA00	3
79	SPLIT WASHER M8	XM61QA00	2
80	SHCS M5 X 16	07022	2
81	SHCS M6 X 8	XM40NJ0G	1
82	SHCS M6 X 16	0070536	2
83	SHCS M6 X 20	06774	3
84	SHCS M6 X 25	0070538	1
85	SHCS M6 X 35	XM40NJ3E	2
86	SHCS M6 X 50	XM40NJ5A	1
87	SHCS M8 X 20	XM40QK2A	2

SLUGGER CUTTERS

CUTTER DIAMETER	DECIMAL EQUIVALENT	1" DEPTH CUT PART #	2" DEPTH CUT PART #	3" DEPTH CUT PART #
7/16	.4375	S4375	SL437	NA
1/2	.5000	S5000	SL500	NA
13MM	.5118	S5118	SL511	NA
14MM	.5512	S5512	SL551	NA
9/16	.5625	S5625	SL562	NA
15MM	.5906	S5906	SL590	NA
5/8	.6250	S6250	SL625	NA
16MM	.6299	S6299	SL629	NA
17MM	.6693	S6693	SL669	NA
11/16	.6875	S6875	SL687	NA
18MM	.7087	S7087	SL708	NA
19MM	.7480	S7480	SL748	NA
3/4	.7500	S7500	SL750	7500S
20MM	.7874	S7874	SL787	*7874S
13/16	.8125	S8125	SL812	8125S
21MM	.8268	S8268	SL826	*8268S
22MM	.8661	S8661	SL866	*8661S
7/8	.8750	S8750	SL875	8750S
23MM	.9055	S9055	SL905	*9055S
15/16	.9375	S9375	SL937	9375S
24MM	.9449	S9449	SL944	*9449S
25MM	.9843	S9843	SL984	*9843S
1	1.000	S1000	SL100	1000S
26MM	1.023	S1023	SL102	*1023S
1-1/16	1.062	S1062	SL106	1062S
27MM	1.063	S1063	SL107	*1063S
28MM	1.102	S1102	SL110	*1102S
1-1/8	1.125	S1125	SL112	1125S
29MM	1.141	S1141	SL114	*1141S
30MM	1.181	S1181	SL118	*1181S
1-3/16	1.187	S1187	SL119	1187S
31MM	1.220	S1220	SL122	*1220S
1-1/4	1.250	S1250	SL125	1250S
32MM	1.259	S1259	SL126	*1259S
33MM	1.299	S1299	SL129	*1299S
1-5/16	1.312	S1312	SL131	1312S
34MM	1.338	S1338	SL133	*1338S

CUTTER DIAMETER	DECIMAL EQUIVALENT	1" DEPTH CUT PART #	2" DEPTH CUT PART #	3" DEPTH CUT PART #
1-3/8	1.375	S1375	SL137	1375S
35MM	1.377	S1377	SL138	*1377S
36MM	1.417	S1417	SL141	*1417S
1-7/16	1.437	S1437	SL143	1437S
37MM	1.456	S1456	SL145	*1456S
38MM	1.496	S1496	SL149	*1496S
1-1/2	1.500	S1500	SL150	1500S
39MM	1.535	S1535	SL153	*1535S
1-9/16	1.562	S1562	SL156	1562S
40MM	1.574	S1574	SL157	*1574S
41MM	1.614	S1614	SL161	*1614S
1-5/8	1.625	S1625	SL162	1625S
42MM	1.654	S1654	SL165	*1654S
1-11/16	1.687	S1687	SL168	1687S
43MM	1.692	S1692	SL169	*1692S
44MM	1.732	S1732	SL173	*1732S
1-3/4	1.750	S1750	SL175	1750S
45MM	1.771	S1771	SL177	*1771S
46MM	1.811	S1811	SL180	*1811S
1-13/16	1.812	S1812	SL181	1812S
47MM	1.850	S1850	SL185	*1850S
1-7/8	1.875	S1875	SL187	1875S
48MM	1.889	S1889	SL188	*1889S
49MM	1.929	S1929	SL192	*1929S
1-15/16	1.937	S1937	SL193	1937S
50MM	1.968	S1968	SL196	*1968S
2	2.000	S2000	SL200	2000S
51MM	2.007	S2007	SL201	*2007S
52MM	2.047	S2047	SL204	2047S
2-1/16	2.062	S2062	SL206	2062S
2-1/8	2.125	S2125-.75S	SL212-.75S	2125S-.75S
2-3/16	2.187	S2187-.75S	SL218-.75S	2187S-.75S
2-1/4	2.250	S2250-.75S	SL225-.75S	2250S-.75S
2-5/16	2.312	S2312-.75S	SL231-.75S	2312S-.75S
2-3/8	2.375	S2375-.75S	SL237-.75S	2375S-.75S

*DENOTES NON-STOCK CUTTERS. CONSULT JANCY ENGINEERING FOR DELIVERY.
NOTE: 3-INCH DEPTH-OF-CUT SLUGGER CUTTERS ARE NOT AVAILABLE BELOW 3/4" DIAMETER.

COOLANT AND CUTTING PASTE

DESCRIPTION	PART #
PINT	10206W
QUART	10207W
GALLON	10208W
5-GALLON	10209W
55-GALLONS	10210W
CUTTING PASTE	10205

SLUGGER CUTTER PILOT PINS (FOR CUTTERS LISTED ABOVE)

PILOT FITS CUTTER SIZES	PART #
1" DEPTH OF CUT / 1/2" DIAMETER AND SMALLER	16001
2" DEPTH OF CUT / 1/2" DIAMETER AND SMALLER	16002
1" DEPTH OF CUT / 9/16" DIAMETER AND LARGER	16003
2" DEPTH OF CUT / 9/16" DIAMETER AND LARGER	16004
ALL STANDARD 3" DEPTH OF CUT	16005

DIMENSIONS AND SPECIFICATIONS	
Height	7"
Width	6-1/2"
Length	14"
Weight	24 lbs.
Motor	Pneumatic 90 psig / 18 cfm 400 RPM (no load)
Arbor Bore	1/2"
Drill Point Breakaway	650 lbs. on 3/4" plate
Magnet Base Dimensions	3-1/4" x 5-5/8"
Magnet Dead Lift	1649 lbs. on 3/4" plate
Sluggger Cutter Diameter (Maximum)	1-1/16"
Sluggger Depth of Cut (Maximum)	3/4"

OTHER AVAILABLE SLUGGER DRILLS

DESCRIPTION	MODEL #	MAX DIAMETER	CAPACITY	DEPTH
USA5 120V	18066	2-3/8"		3"
USA5 240V	18080	2-3/8"		3"
USA5 EX 120V	18066EX	2-3/8"		2"
USA5 EX 240V	18080EX	2-3/8"		2"
USA5 EXB 120V	18066EXB	2-3/8"		2"
USA5 EXB 240V	18080EXB	2-3/8"		2"
JM101 120V	19020	1-3/8"		2"
JM101 240V	19024	1-3/8"		2"
JM101 120V WITH 3/8" SLIDE BAR FEED HANDLE	19021	1-3/8"		2"
2 X 2 120V	17980	2"		2"
2 X 2 240V	17982	2"		2"
4 X 4 120V	17985	4"		3"
4 X 4 240V	17987	4"		3"
MAGFORCE 120V	06920	1-3/8"		2"
MAGFORCE 240V	06921	1-3/8"		2"
AIRFORCE	20002	1-1/16"		3/4"

YOUR DISTRIBUTOR



JANCY ENGINEERING COMPANY

MANUFACTURER OF SLUGGER® CENTERFREE CUTTERS AND PORTABLE MAGNETIC DRILLING MACHINES

Tel · 563.391.1300 or Fax · 563.391.2323

2735 Hickory Grove Road · Davenport, Iowa 52804
email · jancy@jancy.com / web · jancy.com