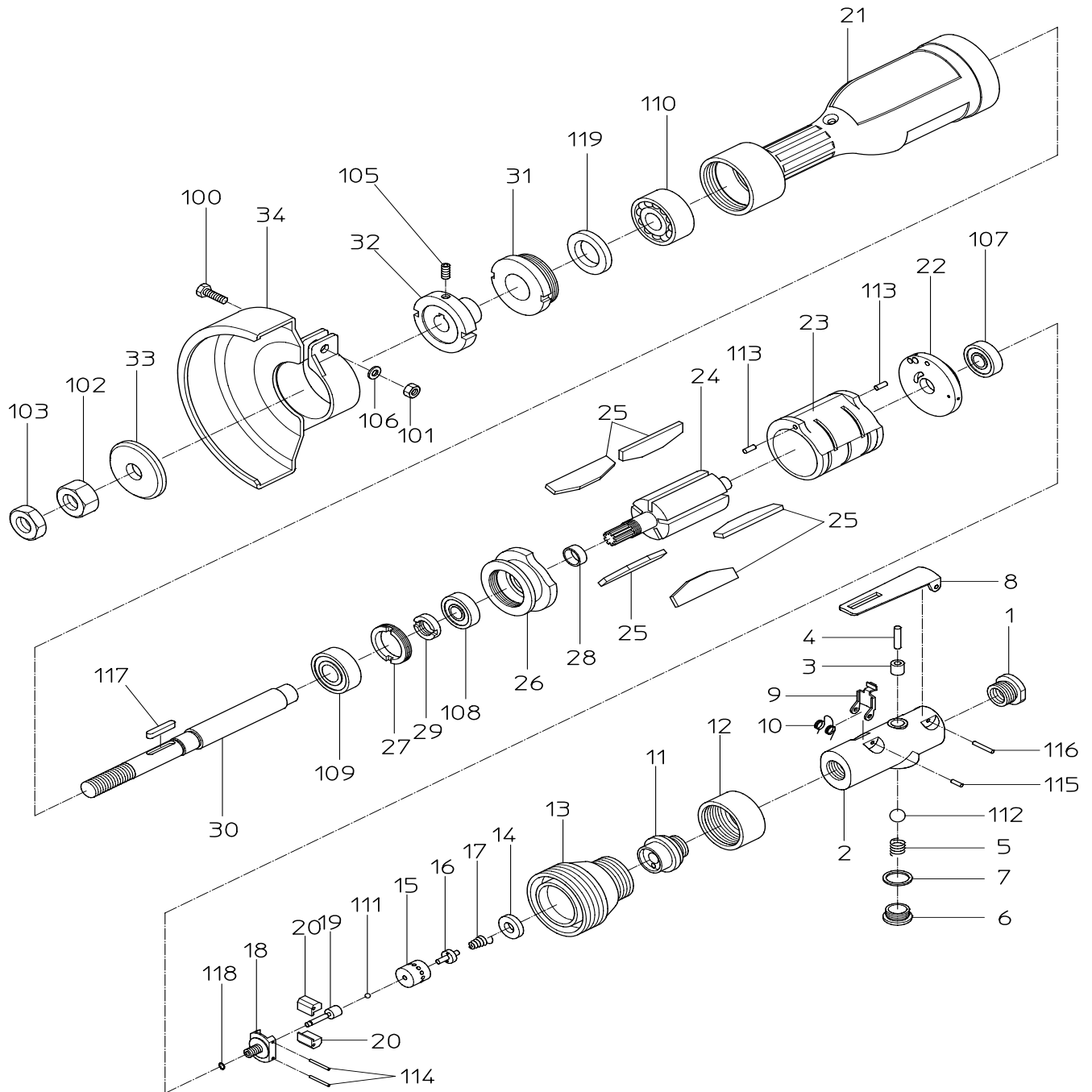


PARTS LIST

NHG-150LW

501700 (G31W00)

501710 (G31W50) (NPT)



日本ニューマチック工業株式会社
NIPPON PNEUMATIC MFG.CO.,LTD.

新旧対照リスト

(1/2)

COMPARISON LIST

型式 MODEL: **NHG-150LW**

| 符号 ITEM | 新品番 NEW PART NO. | 現状品番 CURRENT PART NO. | NEW PART NAME | CURRENT PART NAME | 個数 Q'ty |
|------------|---------------------|--------------------------|------------------|------------------------|------------|
| 1 | 15210840 | I70010H020 | INLET BUSHING | INLET BUSH | 1 |
| 2 | 15008240 | G53W10H290 | THROTTLE ARBOR | THROTTLE ARBOR | 1 |
| 3 | 15009270 | G61000H270 | THROTTLE BUSH | THROTTLE BUSH | 1 |
| 4 | 15009280 | G61000H310 | THROTTLE PIN | THROTTLE PIN | 1 |
| 5 | 15009260 | G61000B210 | THROTTLE SPRING | THROTTLE SPRING | 1 |
| 6 | 15009290 | G61000H360 | THROTTLE PLUG | THROTTLE PLUG | 1 |
| 7 | 15009340 | G61000P800 | RUBBER PACKING | RUBBER PACKING | 1 |
| 8 | 15008260 | G53W10H880 | LEVER | LEVER | 1 |
| 9 | 15008270 | G53W10Z260 | STOPPER | STOPPER | 1 |
| 10 | 15008230 | G53W10B250 | STOPPER SPRING | STOPPER SPRING | 1 |
| 11 | 15006520 | G44Y00H350 | THROTTLE ADAPTOR | THROTTLE ADAPTOR | 1 |
| 12 | 15006410 | G44E00H390 | ARBOR NUT | THROTTLE ARBOR NUT | 1 |
| 13 | 15004240 | G31000H550 | HANDLE | HANDLE | 1 |
| 14 | 15005970 | G44000G300 | GOVERNOR WASHER | GOVERNOR SPRING WASHER | 1 |
| 15 | 15005950 | G44000G230 | GOVERNOR BUSH | GOVERNOR BUSH | 1 |
| 16 | 15005920 | G44000G200 | GOVERNOR VALVE | GOVERNOR VALVE | 1 |
| 17 | 15004230 | G31000B100 | GOVERNOR SPRING | GOVERNOR SPRING | 1 |
| 18 | 15007700 | G53010G210 | GOVERNOR BODY | GOVERNOR BODY | 1 |
| 19 | 15005960 | G44000G240 | GOVERNOR SPINDLE | GOVERNOR SPINDLE | 1 |
| 20 | 15007710 | G53010G220 | GOVERNOR WEIGHT | GOVERNOR WEIGHT | 2 |
| 21 | 15004320 | G31000R730 | ROTOR CASE | ROTOR CASE | 1 |
| 22 | 15006120 | G44000R300 | TOP PLATE | TOP PLATE | 1 |
| 23 | 15004280 | G31000R200 | CYLINDER | CYLINDER | 1 |
| 24 | 15004310 | G31000R720 | ROTOR | ROTOR | 1 |
| 25 | 15006130 | G44000R500 | VANE | VANE | 5 |
| 26 | 15004290 | G31000R510 | BOTTOM PLATE | BOTTOM PLATE | 1 |
| 27 | 15004300 | G31000R520 | PLATE NUT | BOTTOM PLATE NUT | 1 |
| 28 | 15004330 | G31000R740 | ROTOR BUSH | ROTOR BUSH | 1 |
| 29 | 15004340 | G31000R790 | ROTOR NUT | ROTOR NUT | 1 |
| 30 | 15004360 | G31000S320 | STONE SPINDLE | STONE SPINDLE | 1 |
| 31 | 15004350 | G31000S310 | SPINDLE NUT | SPINDLE CASE NUT | 1 |
| 32 | 15004250 | G31000K310 | STONE FLANGE | STONE FLANGE | 1 |
| 33 | 15004260 | G31000K320 | STONE WASHER | STONE WASHER | 1 |
| 34 | 15004270 | G31000K330 | STONE COVER | STONE COVER | 1 |

日本ニューマチック工業株式会社

NIPPON PNEUMATIC MFG. CO., LTD. NHG-150LW_501700_G31W00_020410.xls

新旧対照リスト

COMPARISON LIST

(2/2)

型式 MODEL: **NHG-150LW**

| 符号 | 新品番 | 現状品番 | | | 個数 |
|------|--------------|------------------|----------------|-----------------------|------|
| ITEM | NEW PART NO. | CURRENT PART NO. | NEW PART NAME | CURRENT PART NAME | Q'ty |
| 100 | 72206018 | 1010106018 | HEX. BOLT | HEX. BOLT | 1 |
| 101 | 76111206 | 1204010106 | HEX. NUT | HEX. NUT | 1 |
| 102 | 28100385 | 1204011950 | HEX. NUT | HEX. NUT | 1 |
| 103 | 28100393 | 1204031950 | HEX. NUT | HEX. NUT | 1 |
| 105 | 28100467 | 1602010616 | SET SCREW | HEX. SOCKET SET SCREW | 1 |
| 106 | 76310206 | 1951010060 | WASHER | PLAIN WASHER | 2 |
| 107 | 28201088 | 2012006201 | BALL BEARING | BALL BEARING | 1 |
| 108 | 28201089 | 2012006202 | BALL BEARING | BALL BEARING | 1 |
| 109 | 28201090 | 2012006203 | BALL BEARING | BALL BEARING | 1 |
| 110 | 28204113 | 2041002303 | BALL BEARING | BALL BEARING | 1 |
| 111 | 25502120 | 2800110125 | STEEL BALL | STEEL BALL | 1 |
| 112 | 28205053 | 2800210450 | RUBBER BALL | RUBBER BALL | 1 |
| 113 | 28206059 | 3010040140 | PIN | PARALLEL PIN | 2 |
| 114 | 28208030 | 3030020200 | SPRING PIN | SPRING PIN | 2 |
| 115 | 28208061 | 3030030180 | SPRING PIN | SPRING PIN | 1 |
| 116 | 25305020 | 3030030250 | SPRING PIN | SPRING PIN | 1 |
| 117 | 28209032 | 3102050528 | KEY | KEY | 1 |
| 118 | 25307780 | 3200070023 | RETAINING RING | RETAINING RING | 1 |
| 119 | 28302073 | 4131254106 | OIL SEAL | OIL SEAL | 1 |